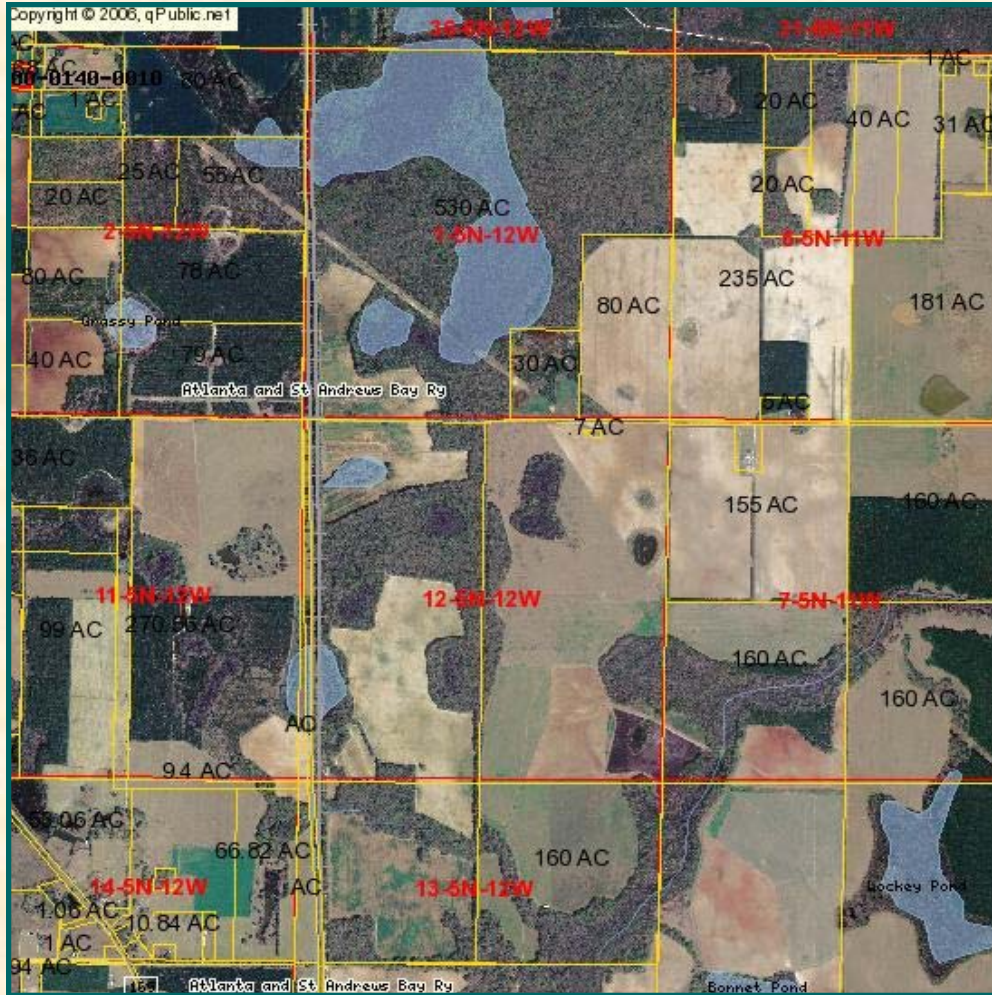


# RECREATIONAL/TIMBER/FARM LAND JACKSON COUNTY, FLORIDA



**\$3,400,000.00**

## Property Description:

- Crop Land 307 Acres
- Timber Land 458 Acres
- Hardwood Swamp 140 Acres
- Swamp/Waste Land 56 Acres
- Total Acreage 961 Acres
- Crop Land Leased for 2009
- 8 Miles North of I-10
- 10 Miles South of Alabama State Line
- 14 Miles South of Country Crossing
- Excellent Deer Hunting Property

## Address:

Douglas Road  
Campbellton, Florida

## Please Contact:

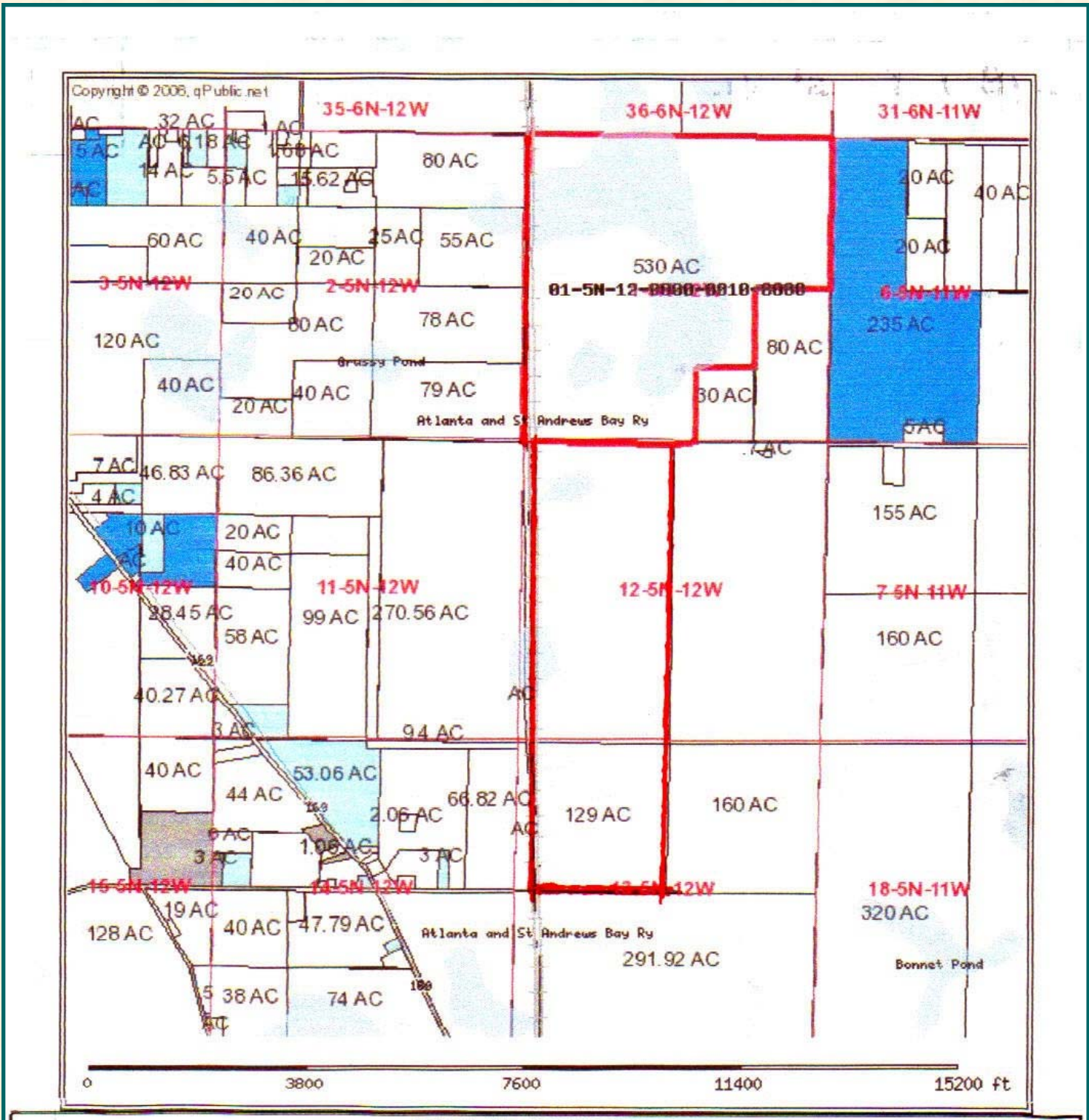
Kenny Whatley  
850.249.5577  
334.596.7890  
kwhatley@whatleydarty.com



22200 PCB Parkway, Ste D., Panama City Beach, FL 32413 850-249-5577 Office

Disclaimer: The information contained herein is believed to be accurate as of the date of its preparation. Whatley & Darty Real Estate & Development, LLC, its agents and its employees disclaim any and all liability for inaccuracies or omissions. Document prepared in February 2009





**For More Information  
Please Contact Kenny Whatley  
334.596.7890 Cell  
kwhatley@whatleydarty.com**



22200 PCB Parkway, Ste D., Panama City Beach, FL 32413 850-249-5577 Office

Disclaimer: The information contained herein is believed to be accurate as of the date of its preparation. Whatley & Darty Real Estate & Development, LLC, its agents and its employees disclaim any and all liability for inaccuracies or omissions. Document prepared in February 2009